

---

**DEPARTMENT OF THE ARMY TECHNICAL MANUAL**


---

**ORGANIZATIONAL, DIRECT SUPPORT, AND GENERAL  
SUPPORT MAINTENCE REPAIR PARTS AND SPECIAL  
TOOLS LISTS (INCLUDING DEPOT MAINTENANCE  
REPAIR PARTS AND SPECIAL TOOLS)  
STILL PICTURE CAMERA SET KS- 15( 1)  
(FSN 6720-301-4635) AND CAMERA  
EQUIPMENT AN/GFQ-2 (FSN 6720-498-9857)**

---

Headquarters, Department of the Army, Washington, D.C.

31 July 1973

---

*Current as of January 1973*

SECTION		<i>Paragraph</i>	<i>Page</i>
I.	INTRODUCTION		
	S c o p e	1-1	2
	General	1-2	2
	Explanation of columns	1-3	2
	Special information	1-4	4
	Location of repair parts	1-5	4
	Abbreviations (Not applicable)	1-6	4
	Reporting of equipment publication improvements	1-7	4
II.	PRESCRIBED LOAD ALLOWANCE (Not applicable)		
III.	REPAIR PARTS LIST (Not applicable)		
IV.	SPECIAL TOOLS, TEST AND SUPPORT EQUIPMENT (Not applicable)		
V .	REPAIR PARTS LIST		6
VI .	SPECIAL TOOLS. TEST AND SUPPORT EQUIPMENT (Not applicable)		
VII.	INDEX-FEDERAL STOCK NUMBER AND REFERENCE NUMBER CROSS-REFERENCE TO FIGURE AND ITEM NUMBER		9

\*This manual supersedes SIG 7 & 8 KE-15(l), 11 May 1956, including all changes.

# SECTION I

## INTRODUCTION

### 1-1. Scope

This manual lists repair parts and special tools required for the performance of organizational, direct support, general support, and depot maintenance of the KS-15 (1) and AN/GFQ-2. The PCCN for the KS-15(1) is GRNAAX and the AN/GFQ-2 is GRNABX.

### 1-2. General

This repair parts and special tools list is divided into the following sections:

- a. *Prescribed Loud Allowance (PLA)*-Section II. Not applicable.
- b. *Repair Parts List-Section III*. Not applicable.
- c. *Special Tools, Test and Support Equipment-Section IV*. Not applicable.
- d. *Repair Parts List-Section V*. A list of repair parts authorized for the performance of maintenance at the direct support, general support, and depot level.
- e. *Special Tools, Test and Support Equipment-Section VI*. Not applicable
- f. *Index-Federal Stock Number and Reference Number Cross-Reference to Figure and Item Number-Section VII*. A list, in ascending numerical sequence, of all Federal stock numbers appearing in the listings, followed by a list, in alphameric sequence, of all reference numbers appearing in the listings. Federal stock number and reference numbers are cross-referenced to each illustration figure and item number or reference designation appearance.

### 1-3. Explanation of Columns

The following provides an explanation of columns found in the tabular list.

#### a. Source, Maintenance, and Recoverability Codes (SMR).

(1) *Source* code. Indicates the manner of acquiring support items for maintenance, repair, or overhaul of end items. Source codes are-

Code	Explanation
PA-Item procured and stocked for anticipated or known usage.	
PB-Item procured and stocked for insurance purposes because essentiality dictates that a minimum quantity be available in the supply systems.	
PC-Item procured and stocked and which other-	

Code	Explanation
	wise would be coded PA except that it is deteriorative in nature.
PD-	Support item, excluding support equipment, procured for initial issue or outfitting and stocked only for subsequent or additional initial issues or outfittings. Not subject to automatic replenishment.
PE-	Support equipment procured and stocked for initial issue or outfitting to specified maintenance repair activities.
PF-	Support equipment which will not be stocked but which will be centrally procured on demand.
PG-	Item procured and stocked to provide for sustained support for the life of the equipment. It is applied to an item peculiar to the equipment which because of probable discontinuance or shutdown of production facilities would prove uneconomical to reproduce at a later time.
KD-	An item of depot overhaul repair kit and not purchased separately. Depot kit defined as a kit that provides items required at the time of overhaul or repair.
KF-	An item of a maintenance kit and not purchased separately. Maintenance kit defined as a kit that provides an item that can be replaced at organizational or direct support or general support levels of maintenance.
KB-	Item included in both a depot overhaul/repair kit and a maintenance kit.
MO-	Item to be manufactured or fabricated at organizational level.
ME-	Item to be manufactured or fabricated at direct support maintenance level.
MH-	Item to be manufactured or fabricated at general support maintenance level.
MD-	Item to be manufactured or fabricated at depot maintenance level.
AO-	Item to be assembled at organizational level.
AF-	Item to be assembled at direct support maintenance level.
AH-	Item to be assembled at general support maintenance level.
AD-	Item to be assembled at depot maintenance level.
XA-	Item is not procured or stocked because the requirements for the item will result in the replacement of the next higher assembly.

Code	Explanation
<b>XB</b>	Item is not procured or stocked. If not available through salvage, requisition.
<b>XC</b>	Installation drawing, diagram instruction sheet, field service drawing, that is identified by manufacturers' part number.
<b>XD</b>	Support items can be requisitioned with justification.

**NOTE**

Cannibalization or salvage may be Used as a source of supply for any items source coded above except those coded XA and aircraft support items as restricted by AR 700-42.

(2) **Maintenance code.** Maintenance codes are assigned to indicate the levels of maintenance authorized to USE and REPAIR support items. The maintenance codes are entered in the third and fourth positions of the Uniform SMR Code Format as follows-

(a) **Use (third position).** The maintenance code entered in the third position indicates the lowest maintenance level authorized to remove, replace, and use the support item. The maintenance code entered in the third position indicates one of the following levels of maintenance.

Code	Application/Explanation
o-	Support item is removed, replaced, used at the organizational level of maintenance.

**NOTE**

A code "C" may be used in this position to denote crew or operator maintenance performed within organizational maintenance.

code	Application/Explanation
F-	Support item is removed, replaced, used at the direct support maintenance level.
H-	Support item is removed, replaced, used at the general support maintenance.
D-	Support items that are removed, replaced, used at depot only.

(b) **Repair (fourth position).** The maintenance code entered in the fourth position indicates whether the item is to be repaired and identifies the lowest maintenance level with the capability to perform complete repair (i.e., all authorized maintenance functions). When a maintenance code is not used a dash (-) sign is entered. For multi-service equipment/systems or when a code is entered, this position will contain one of the following maintenance codes as assigned by the service(s) that require the code

Code	Application/Explanation
O-	The lowest maintenance level capable of com-

Code	Explanation
	plete repair of the support item is the organizational level.
F-	The lowest maintenance level capable of complete repair of the support item is direct support.
H-	The lowest maintenance level capable of complete repair of the support item is general support.
D-	The lowest maintenance level capable of complete repair of the support item is the depot level.
L-	Repair restricted to designated Specialized Repair Activity.
Z-	Non-repairable. No repair is authorized.
B-	No repair is authorized. The item may be reconditioned by adjusting, lubricating, etc., at the user level. No parts or special tools are procured for the maintenance of this item.

(3) **Recoverability code.** Recoverability codes are assigned to support items to indicate the disposition action on unserviceable items. The recoverability code is entered in the fifth position of the uniform SMR Code Format as follow-

Code	Explanation
Z-	Nonrepairable item.. When unserviceable, condemn and dispose at the level indicated in the first digit of the maintenance code.
O-	Repairable item. When uneconomically repairable, condemn and dispose at organizational level.
F-	Repairable item. When uneconomically repairable, condemn and dispose at the direct support level.
H-	Repairable item. When uneconomically repairable, condemn and dispose at the general support level.
D-	Repairable item. When beyond lower level repair capability, return to depot. Condemnation and disposal not authorized below depot level.
L-	Repairable item. Repair, condemnation, and disposal not authorized below depot/Specialized Repair Activity level.
A-	Item requires special handling or condemnation procedures because of specific reasons (i.e., precious metal content, high dollar value, critical material or hazardous material).

b. **Federal Stock Number.** Indicates the Federal stock number assigned to the item and will be used for requisitioning purposes.

c. **Description.** Indicates the Federal item name and a minimum description required to identify the item. The last line indicates the reference number followed by the applicable Federal Supply Code for Manufacturer (FSCM) in parentheses. The

FSCM is used as an element in item identification to designate manufacturer or distributor or Government agency, etc., and is identified in SB 708-42.

d. Unit of Measure (U/M). 1. Indicates the standard or basic quantity by which the listed item is used in performing the actual maintenance function. This measure is expressed by a two-character alphabetical abbreviation; e.g. ea. in, pr, etc., and is the basis used to indicate quantities and allowances in subsequent columns. When the unit of measure differs from the unit of issue, the lowest unit of issue that will satisfy the required units of measure will be requisitioned.

e. Quantity incorporated in Unit. This column indicates the quantity of the item used in the equipment.

f. 15-Day Organizational Maintenance Allowances. Not applicable.

g. 30-Day DS/GS Maintenance Allowances. Not applicable.

h. 1-Year Allowances Per 100 Equipments/Contingency Planning Purposes. Column intentionally left blank.

i. Depot Maintenance Allowance Per 100 Equipments. This column indicates opposite the first appearance of each item the total quantity authorized for depot maintenance of 100 equipments.

j. Illustration.

(1) Figure number. Indicates the figure number of the illustration on which the item is shown in TM11-6720-201-15.

(2) Item number. Not applicable.

#### 1-4. Special Information

a. Usable on codes are included in column 3. Uncoded items are applicable to all models. Identification of the usable on codes used in this publication are-

Code	Used on
<b>AKX</b>	KS-15 (1)
<b>AQW</b>	AN/GFQ-2

b. The following publication pertains to the equipment and its components:

TM11-6720-201-15 Operator, Organizational, Field and Depot Maintenance Manual: Still Picture Camera Set KS-15(l) and Camera Equipment AN/GFQ-2.

#### 1-5. Location of Repair Parts

4. This manual contains one cross-reference index (sec VII) to be used to locate a repair part when either the Federal stock number or reference number (manufacturer's part number) is known. The first column in the index is prepared in numerical or alphanumeric sequence in ascending order. The reference numbers (manufacturer's part numbers) are listed immediately following the last listed Federal stock number in the index of Federal stock numbers.

b. When the Federal stock number or reference number is known, follow the procedures given in (1) and (2) below.

(1) Refer to the index of Federal stock numbers (sec VII), and locate the Federal stock number or reference number. The FSN and reference number are cross-referenced to the applicable figure and item number or reference designation.

(2) Refer to the repair parts list (sec III and V) and locate the figure number (col 7a-20P, 10a-34P) and item number or reference designation (col 7b-20P, 10b-34P) as noted in the FSN index.

c. When the figure and item number or reference designation are known, scrutinize columns 7a and 7b-20P and 10a and 10b-34P. of the repair parts list (sec III and V) until the item is located.

d. When the FSN, reference number, figure number, and item number are not known, scrutinize column 3 of the repair parts list (sec III and V) , which is arranged in alphabetical order.

#### 1-6. Abbreviations

(Not applicable.)

#### 1-7. Reporting of Equipment Publication Improvements

The reporting of errors, omissions, and recommendations for improving this publication by the individual user is encouraged. Reports should be submitted on DA Form 2028 (Recommended Changes to Publications) and forwarded direct to Ccmmander, US Army Electronics Command, ATTN: AMSEL-MA-SNV, Fort Monmouth, N.J. 07703.

(1) SMR CODE	(2) FEDERAL STOCK NUMBER	(3) DESCRIPTION REFERENCE NUMBER & MFR. CODE USABLE ON CODE	(4) UNIT OF MEAS	(5) QTY INC IN UNIT	(6) 30-DAY DS MAINT ALLOWANCE			(7) 30-DAY GS MAINT ALLOWANCE			(8) 1-YR ALW PER 100 EQUIP CNTGCT	(9) DEPOT MAINT ALW PER 100 EQUIP	(10) ILLUSTRATION	
					(a)	(b)	(c)	(a)	(b)	(c)			(a)	(b)
					1-20	21-50	51-100	1-20	21-50	51-100			FIGURE NO.	ITEM NO.
PADZZ	6250-537-4058	ADAPTER, LAMPHOLDER NO-REF-DESIG CODE... COOWO. 16062 (17652) AKX	EA	1								4	2	
PADZZ	6135-160-7159	BATTERY BA-261/U NO-REF-DESIG..... AKX BA261U (81350) AKX	EA	1								3		
PADZZ	6720-510-7579	CABLE ASSEMBLY, SPECIAL PURPOSE NO-REF-... DESIG FLASH CORD ASSY COMPLETE 561111F (54370) AKX	EA	1								5	2 4	
PADHD	6720-200-4384	CAMERA, STILL PICTURE KE-15(1) NO-REF-... DES16 GENERAL PURPOSE TYPE 35 MM ROLL FILM, 36 EXP 50 MM, F2.0 LENS, FOCAL PLANE SHUTTER 1 SEC TO 7/1000 SEC 10061 (35643) AKX	EA	1								3	7	
PADZZ	6720-200-4372	CARRYING CASE, PHOTOGRAPHIC EQUIPMENT NO- REF-DESIG FOR CAMERA & ACCESSORIES 14547 (14632) AKX	EA	1								3	2	
PADZZ	6760-200-4373	CARRYING CASE, PHOTOGRAPHIC EQUIPMENT NO- REF-DESIG CAMERA CASE 14515 (28265) AKX	EA	1								3	1 6	
PADZZ	6760-598-5910	FILTER, LIGHT, PHOTOGRAPHIC LENS NO-REF-... DES16 ORANGE GLASS 13025 (CC781) AKX	EA	1								3	2	
PADZZ	6720-318-6750	HOUSING NO-REF-DESIG ENCLOSURES INNER... COMPONENTS OF FLASH UNITS, ALSO MTS ENTIRE FLASH UNIT TO CAMERA IN COMBINATION 150-155-17 (04049) AKX	EA	1								3	2 3	
PADZZ	6720-318-6751	HOUSING NO-REF-DESIG CONTAINS CAPACITOR AND BATT U280 (35643) AKX	EA	1								3	2 3	
PADZZ	6250-523-6068	LAMPHOLDER NO-REF-DESIG MEDIUM SCREW... BASE 41.5 MM LG X 37.8 MM DIM O/A U39 (12821) AKX	EA	1								5	2 3	
PADZZ	6760-597-4745	LENS, CAMERA GENERAL PHOTOGRAPHIC NO-REF- DESIG 135 MM, F/4.5 TELEPHOTO. 11035 (0C781) AKX	EA	1								5	1 1	
PADZZ	6760-753-5236	LENS, CAMERA, GENERAL PHOTOGRAPHIC NO-REF- DESIG 35 MM, F/3.5, WIDE-ANGLE 11006 (80165) AKX	EA	1								5	1 1	
PADZZ	6723-316-6753	REFLECTOR, LIGHT NO-REF-DESIG 170 MM. DIA X 34.0 THK D/A REFLECTOR, FANTYPE COLLAPSIBLE U110 (17856) AKX	EA	1								3	2 3	
PADZZ	6760-200-4365	SHADE, PHOTOGRAPHIC LENS NO-REF-DESIG... FOR 135 MM HEKTOR LENS 12530 (53C49) AKX	EA	1								3	2	
PADZZ	6760-200-4366	SHADE, PHOTOGRAPHIC LENS NO-REF-DESIG... FOR 35 MM SUMMARON LENS. 12505 (80165) AKX	EA	1								3	2	
PADZZ	6760-200-4367	SHADE, PHOTOGRAPHIC LENS NO-REF-DESIG.... FOR 50 MM SUMMICRON LENS. 12516 (77294) AKX	EA	1								3	2 5	
PADZZ	6760-597-5346	VIEWFINDER, CAMERA NO-REF-DESIG IMARECT CONTINUED	EA	1								3	1 3	

(1) SMR CODE	(2) FEDERAL STOCK NUMBER	(3) DESCRIPTION REFERENCE NUMBER & MFR CODE USABLE ON CODE		(4) UNIT OF MEAS	(5) QTY INC IN UNIT	(6) 30-DAY DS MAINT ALLOWANCE			(7) 30-DAY GS MAINT ALLOWANCE			(8) 1-YR ALW PER 100 EQUIP CNTGCT	(9) DEPOT MAINT ALW PER 100 EQUIP	(10) ILLUSTRATION		
						(a)	(b)	(c)	(a)	(b)	(c)			(a)	(b)	
						1-20	21-50	51-100	1-20	21-50	51-100			FIGURE NO.	ITEM NO.	
		CONTINUED														
PADZZ	8020-200-6327	DESIG 35 MM, F/3.5, WIDE-ANGLE 12000 (66127)	AKX	EA	1											
PADZZ	7930-392-9751	BRUSH NO-REF-DESIG (NOT INSTALLED) (NOT MOUNTED). BS2-10-1 (C7055)	AKX	EA	1											
PADZZ	6640-393-2090	CLENER, LENS NO-REF-DESIG (NOT INSTALLED) (NOT MOUNTED). 08756 (31568)	AKX	EA	1											
PADZZ	6710-356-6334	PAPEK, LENS NO-REF-DESIG TYPE 1 (NOT INSTALLED) (NOT MOUNTED). UUP313 (81348)	AKX	EA	1											
PADZZ	6760-200-4369	SYRINGE NO-REF-DESIG (NOT INSTALLED) (NOT MOUNTED). 3551 (25472)	AKX	EA	1											
PADZZ	6760-345-9214	MAGAZINE FILM NO-REF-DESIG FILM..... CASSETTE. 14000 (06811)	AKX	EA	1										1	4
PADZZ	6720-318-6705	LENS,CAMERA,GENERAL PHOTOGRAPHIC NO-REF-DESIG 50 MM F/2 35 MM FIELD OF VIEW COVERED CODE NO. S00ZC. 11016 (89321)	AKX	EA	1											
PADZZ	6720-823-9695	SPOOL, PHOTOGRAPHIC FILM NO-REF-DESIG..... TAKE-UP SPOOL 14020 (62583)	AKX	EA	1											
PADZZ	6760-823-9699	CAMERA, STILL PICTURE KE-15(3) NO-REF-DESIG..... QESIG LEICA M3. 10180 (82423)	AQW	EA	1											
PADZZ	6760-814-2876	CARRYING CASE, PHOTOGRAPHIC EQUIPMENT NO-REF-DESIG..... REF-DESIG 14803 (14652)	AQW	EA	1											
PADZZ	6760-823-9698	FILTER, LIGHT, PHOTOGRAPHIC LENS NO-REF-DESIG..... DESIG 13101 (35643)	AQW	EA	1											
PADZZ	6760-823-9696	FLASH GUN, PHOTOGRAPHIC ND-REF-DESIG..... 15503 (80165)	AQW	EA	1											
PADZZ	6760-823-9697	LENS, CAMERA, GENERAL PHOTOGRAPHIC NO-REF-DESIG..... DESIG 11106 (83165)	AQW	EA	1											
PADZZ	6760-200-4369	LENS, CAMERA, GENERAL PHOTOGRAPHIC NO-REF-DESIG..... DESIG 11850 (50703)	AQW	EA	1											
PADZZ	6760-815-5914	MAGAZINE, FILM NO-REF-DESIG FILM..... CASSETTE 14301 (73760)	AQW	EA	1											
PADZZ	6760-814-60799	SHADE, PHOTOGRAPHIC LENS NO-REF-DESIG..... 12571 (53239)	AQW	EA	1											
PADZZ	6760-814-2874	SHADE, PHOTOGRAPHIC LENS NO-REF-DESIG..... 12575 (80165)	AQW	EA	1											
PADZZ	6760-814-2874	SPOOL, PHOTOGRAPHIC FILM NO-REF-DESIG..... TAKE-UP SPOOL. 14022 (80165)	AQW	EA	1											

SECTION V.

TM11-6720-201-24P

(1) SMR CODE	(2) FEDERAL STOCK NUMBER	(3) DESCRIPTION REFERENCE NUMBER & MFR. CODE USABLE ON CODE		(4) UNIT OF MEAS	(5) QTY INC IN UNIT	(6) 30-DAY DS MAINT ALLOWANCE			(7) 30-DAY GS MAINT ALLOWANCE			(8) 1-YR ALW PER 100 EQUIP CNTGCV	(9) DEPOT MAINT ALW PER 100 EQUIP	(10) ILLUSTRATION	
						(a)	(b)	(c)	(a)	(b)	(c)			(a)	(b)
						1-20	21-50	51-100	1-20	21-50	51-100			FIGURE NO.	ITEM NO.
PADZZ	8020-245-6327	BRUSH NO-REF-DESIG (NOT INSTALLED) (NOT MOUNTED).		EA	1								3		
PADZZ	7930-392-9751	CLEANER, LENS NO-REF-DESIG (NOT INSTALLED) (NOT MOUNTED).		EA	1								3		
PADZZ	6640-393-2090	PAPER, LENS NO-REF-DESIG TYPE 1 (NOT INSTALLED) (NOT MOUNTED) (LENS TISSUE).		EA	1								3	3	
PADZZ	6710-356-6334	SYRINGE NO-REF-DESIG (NOT INSTALLED) (NOT MOUNTED).		EA	1								3		
PADZZ	6760-200-4369	MAGAZINE, FILM NO-REF-DESIG CASSETTE 14000 (36811)		EA	1								3	3	

SECTION VII.

TM11-6720-201-24P

**INDEX - FEDERAL STOCK NUMBER AND REFERENCE NUMBER  
CROSS-REFERENCE TO FIGURE AND ITEM NUMBER**

STOCK NUMBER	FIGURE NO.	ITEM NO.	STOCK NUMBER	FIGURE NO.	ITEM Text
<b>6135-160-7159</b>			6760-200-4369		
<b>6250-523-6068</b>	23		6760-200-4373	14	
<b>6250-537-4056</b>	2		6760-345-9214	11	
6640-393-2090			6760-597-4745	13	
6640-393-2090	3		6760-597-5346		
<b>6710-356-6334</b>			6760-598-5910	11	
<b>6720-200-4372</b>	2		6760-753-5236	14	
<b>6720-200-4384</b>	7		<b>6760-814-2874</b>	3	
<b>6720-318-6705</b>	2		<b>6760-814-2876</b>		
<b>6720-318-6750</b>	23		6760-814-6079		
<b>6720-318-6751</b>	23		<b>6760-815-5914</b>		
<b>6720-318-6763</b>	23		<b>6760-823-9696</b>		
<b>6720-510-7579</b>	24		6760-823-9697		
6720-823-9695	8		6760-023-9698	5	
<b>6760-200-4365</b>	2		6760-823-9699	3	
<b>6760-200-4366</b>	2		<b>7930-392-9751</b>		
<b>6760-200-4367</b>	25		<b>8028-200-6327</b>		
<b>6760-200-4369</b>	3		8020-245-6327		

REFERENCE NO.	MFR CODE	FIG. NO.	ITEM NO.	REFERENCE NO.	MFR CODE	FIG. NO.	ITEM NO.
<b>BA261U</b>	<b>81350</b>			12530	<b>53049</b>	<b>2</b>	
<b>BS2-10-1</b>	<b>07055</b>			12571	<b>53239</b>		
<b>HB391SIZEZ1-21N</b>	<b>81348</b>			12575	<b>80165</b>		
<b>UUP313</b>	<b>81348</b>			13025	<b>00781</b>	<b>2</b>	
<b>UUP313</b>	<b>81348</b>	<b>3</b>		<b>13101</b>	<b>35643</b>	<b>3</b>	
<b>U110</b>	<b>17856</b>			<b>14000</b>	<b>06811</b>	<b>3</b>	
<b>U280</b>	<b>35643</b>	<b>23</b>		<b>14000</b>	<b>06811</b>	<b>14</b>	
<b>U39</b>	<b>12821</b>	<b>23</b>		<b>14001</b>	<b>73760</b>	<b>3</b>	
08756	<b>31568</b>			<b>14020</b>	<b>62983</b>	<b>2</b>	
<b>10061</b>	<b>35643</b>	<b>7</b>		<b>14022</b>	<b>80165</b>	<b>14</b>	
<b>10180</b>	<b>82423</b>	<b>8</b>		<b>14515</b>	<b>28265</b>	<b>16</b>	
<b>11006</b>	<b>80165</b>	<b>11</b>		<b>14547</b>	<b>14632</b>	<b>2</b>	
<b>11016</b>	<b>89321</b>	<b>11</b>		<b>14803</b>	<b>14652</b>	<b>3</b>	
<b>11035</b>	<b>30781</b>	<b>11</b>		<b>150-155-17</b>	<b>04049</b>	<b>23</b>	
<b>11106</b>	<b>80165</b>			<b>15503</b>	<b>80165</b>	<b>5</b>	
<b>11850</b>	<b>50703</b>			16062	<b>17652</b>	<b>2</b>	
<b>12000</b>	<b>66127</b>	<b>13</b>		<b>3551</b>	<b>25472</b>		
<b>12505</b>	<b>80165</b>	<b>2</b>		<b>5611IF</b>	<b>54370</b>	<b>24</b>	
<b>12516</b>	<b>77294</b>	<b>25</b>					



By Order of the Secretary of the Army:

**CREIGHTON W. ABRAMS**  
*General, United States Army*  
Chief of Staff

**Official:**

**VERNE L. BOWERS**  
*Major General, United States Army*  
The Adjutant General

**Distribution:**

*Active Army*

USASA (2)	Sig FLDMS (1)	17
CNGB (1)	USAERDAA (1)	17-42
ACSC-E (2)	USAERDAW (1)	19-27
USAARENBD ( 2 )	MAAG (1)	19-67
USAMB (10)	USARMIS (1)	19-27
AMC (1)	WRAMC (1)	19-217
CONARC (5)	USA Crim Inves Lab (2)	19-500 (AA-AE)
ARADCOM (2)	AV Comm Cen (1)	20-17
ARADCOM Rgn (2)	Units org under fol TOE.	29-1
OS Maj Comd (4)	(1 copy each)	29-2
LOGCOMDS (5)	5-25	29-11
MICOM (2)	5-28	29-21
TECOM (2)	5-35	29-41
USASTRATCOM (4)	5-52	29-51
HISA (ECOM) (18)	5-101	29-111
MDW (1)	5-145	29-134
Armies (2)	5-146	29-136
Corps (2)	5-155	30-14
Svc colleges (2)	5-156	30-17
USASESS (5)	5-500 (AA-AC)	39-18
USAADS (2)	6-201	30-25
USAFAS (2)	6-302	30-26
USAARMS (2)	7	30-28
USAIS (2)	7-157	30-28
USAES (2)	8-500 (AA-AJ)	30-34
USAINTS (3)	0-22	30-500 (AA-AN)
USACDCEC (5)	9-86	31-105
Instl (2) except	9-500 (AA-AC)	30-107
Fort Gordon (10)	9-510	33-105
Fort Huachuca (10)	11-15	33-106
Fort carson (10)	11-16	3-107
Fort Bragg (5)	11-35	37
Fort Campbell (5)	11-39	37-42
Ft Richardson (ECOM Ofc) (2)	11-95	39-51
WSMR (2)	11-96	47
Army Dep (2) except	11-215	55-500 (AA-AD)
LBAD (14)	11-216	57
SAAD (30)	11-225	57-42
TOAD (14)	11-226	57-100
LEAD (7)	11-237	57-102
ATAD (10)	11-500 (AA-AC)	67
USA Dep (2)	12-37	77-100
Sig Sec USA Dep (2)	12-77	77-102
Sig Dep ( 5 )	12-157	

NG: State AG (3); Units - Same as Active Army.

USAR: None

For explanation of abbreviations used. see AR 310-50.

---

**END**

8-1-83

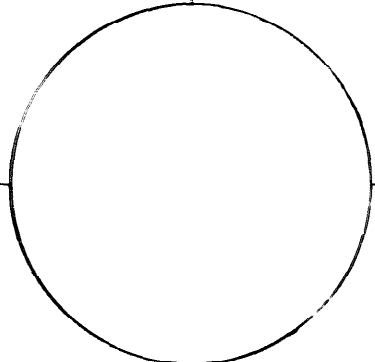
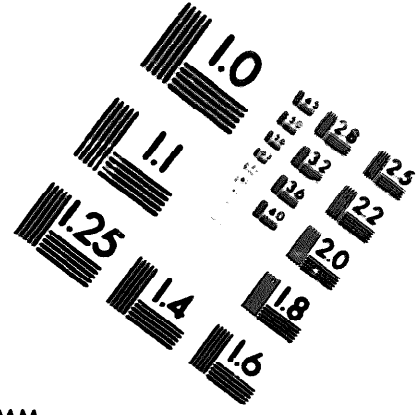
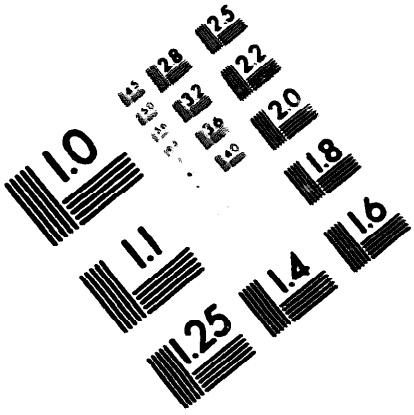
**DATE**





DEPARTMENT OF THE ARMY

MICROFORM  
TEST TARGET



150 MM

1.0 mm (e= 81 μm)

ABCDEFGHIJKLMN OPQR STUVWXYZ 1234567890  
abcdefghijklmnopqrstuvwxyz \$%&'()\*+,-./:;<=>@\*~

1.5 mm (e= 109 μm)

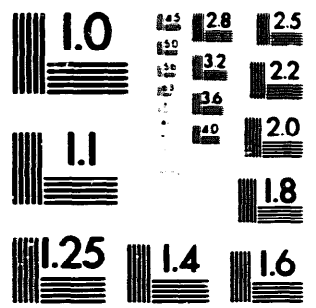
ABCDEFGHIJKLMN OPQR STUVWXYZ 1234567890  
abcdefghijklmnopqrstuvwxyz \$%&'()\*+,-./:;<=>@\*~

2.0 mm (e= 137 μm)

ABCDEFGHIJKLMN OPQR STUVWXYZ  
abcdefghijklmnopqrstuvwxyz  
1234567890 \$%&'()\*+,-./:;<=>@\*~

2.5 mm (e= 177 μm)

ABCDEFGHIJKLMN OPQR STUVWXYZ  
abcdefghijklmnopqrstuvwxyz  
1234567890 \$%&'()\*+,-./:;<=>@\*~



1.0 mm (e= 81 μm)

ABCDEFGHIJKLMN OPQR STUVWXYZ 1234567890  
abcdefghijklmnopqrstuvwxyz \$%&'()\*+,-./:;<=>@\*~

1.5 mm (e= 109 μm)

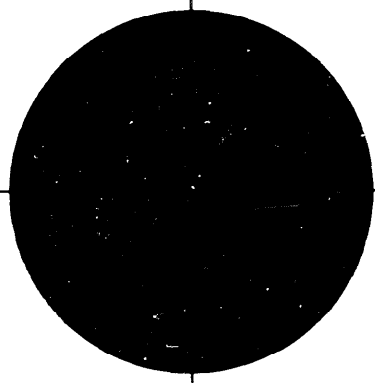
ABCDEFGHIJKLMN OPQR STUVWXYZ 1234567890  
abcdefghijklmnopqrstuvwxyz \$%&'()\*+,-./:;<=>@\*~

2.0 mm (e= 137 μm)

ABCDEFGHIJKLMN OPQR STUVWXYZ  
abcdefghijklmnopqrstuvwxyz  
1234567890 \$%&'()\*+,-./:;<=>@\*~

2.5 mm (e= 177 μm)

ABCDEFGHIJKLMN OPQR STUVWXYZ  
abcdefghijklmnopqrstuvwxyz  
1234567890 \$%&'()\*+,-./:;<=>@\*~



200 MM

250 MM

